

# Case Study: Summit House, London

118/Oct18



## Architectural aluminium systems by Kawneer help Summit House reach a green peak

Architectural glazing systems by Kawneer have played a “pivotal” role in the redevelopment of Summit House, a seven-storey 1980s office building in London’s Spitalfields, into an energy-efficient flagship.

**Building:** Summit House

**Location:** Spitalfields, London

**Main Contractor:** Willmott Dixon

**Installer:** JPJ Installations

[WWW.KAWNEER.CO.UK](http://WWW.KAWNEER.CO.UK)

 **KAWNEER**  
AN ARCONIC COMPANY



## Kawneer helps deliver an energy-efficient flagship

Summit House, a seven-storey building on a tight site in London's Spitalfields, has been converted by Willmott Dixon following the main contractor's delivery of Mansel House in Wimbledon which modernised a 1960s building to make it 50% more energy efficient than equivalent buildings.

The aim is to raise a building's energy efficiency to an EPC rating of B and a BREEAM rating of "Excellent".

To carry out the Summit House refit, Willmott Dixon gutted the original 80,000ft<sup>2</sup> building, including stripping back most of the existing façade and fifth floor.

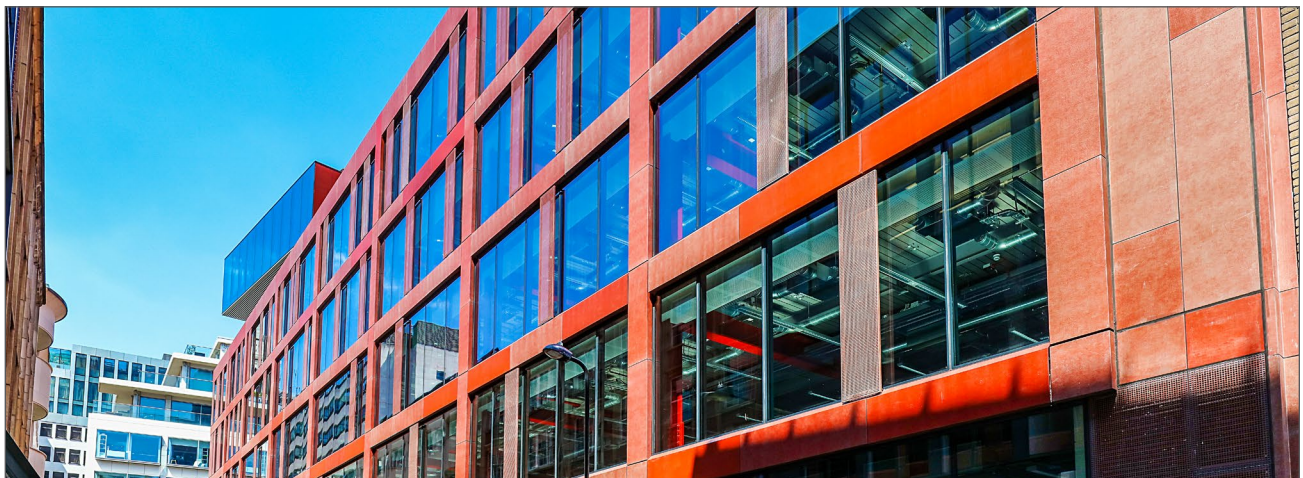
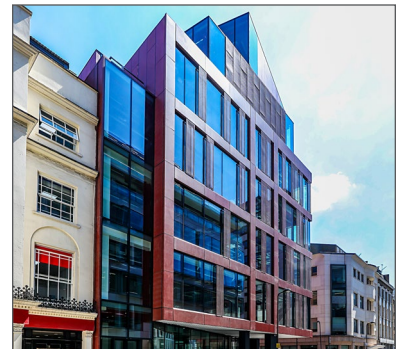
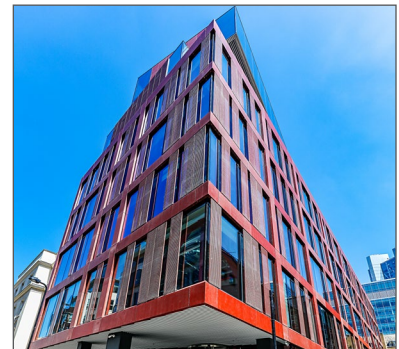
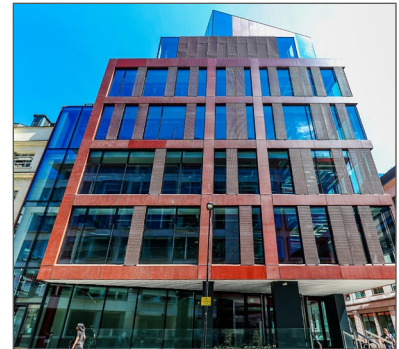
They then added two new floors on top and re-clad the façade with a mixture of Kawneer full-height glazing and copper, along with adding high-spec internal finishes.

Kawneer's AA<sup>®</sup>100 SSG (Structurally Silicone Glazed) curtain walling with 50mm sightlines and bespoke T-bar mullions features throughout the façade, complemented by series 190 heavy-duty entrance doors to the main entrance and AA<sup>®</sup>720 doors to the roof terraces. The copper rainscreen system is attached to the front of Kawneer's curtain walling.

The internal areas have had a CAT A fit-out and exposed "Shoreditch" style look, with existing steel work, decking and new services left exposed. There are also eight new lifts within the building to provide better access to the new floor areas.

Now complete, Summit House has attracted a host of tech companies with its proximity to Old Street's Silicon Roundabout, home to many of the world's leading start-up companies for developing new technology.

The Kawneer systems were fabricated and installed by JPJ Installations who had a team of up to 20 on site for nine months.



Please contact our Architectural Services Team if you have a project you would like to discuss: Tel: 01928 502604 / Email: [kawneerAST@arconic.com](mailto:kawneerAST@arconic.com)

Kawneer UK Limited, Astmoor Road, Astmoor Industrial Estate, Runcorn, Cheshire WA7 1QQ  
Tel: + 44 (0)1928 502500 Fax: + 44 (0)1928 502501

[WWW.KAWNEER.CO.UK](http://WWW.KAWNEER.CO.UK)

 **KAWNEER**  
AN ARCONIC COMPANY